

# Citrix Workspace App for iOS

---

V 20.2.2

3/16/2020

## **Contents**

- Summary..... 2
- Requirements ..... 2
- Installation..... 3
- Using Launchpad ..... 6

## Summary

Citrix Workspace App for iOS (formerly Citrix Receiver) is the application required to use Launchpad.humana.com on an iPhone, iPad, or iPod touch. Launchpad.humana.com is used to access Humana applications and desktops securely and remotely on your personal or Humana provided devices. The following document outlines the steps to install and configure Citrix Workspace App for iOS.

## Requirements

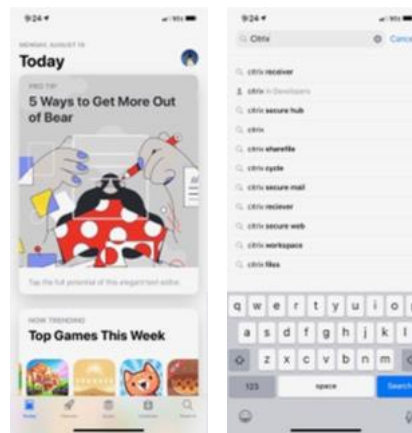
- An Apple device running iOS version 10 or higher
  - iPhone 7 or newer
  - iPad Generation 3 or newer
- Internet connection. A strong WiFi connection is recommended for best performance. Drops in Internet connection can cause disconnects and slow response in applications and desktops.

## Installation

1. From the device home screen, locate and tap the App Store icon.



2. Tap “Search” on the bottom right of the window. Type “Citrix” in the search box then tap the “Search” button.



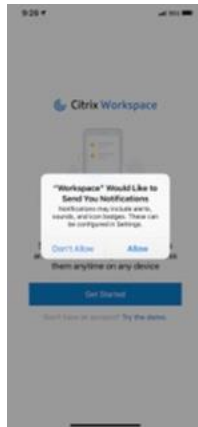
3. Locate “Citrix Workspace” in the list and tap the download or “Get” button. Follow the prompts to install the app.



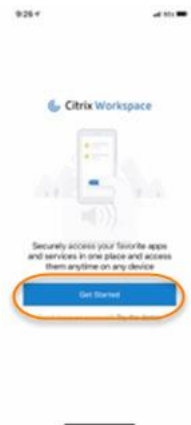
4. Once installed, tap the “Open” button to open the app. You can also open the app from the device home screen by tapping the Workspace App icon.



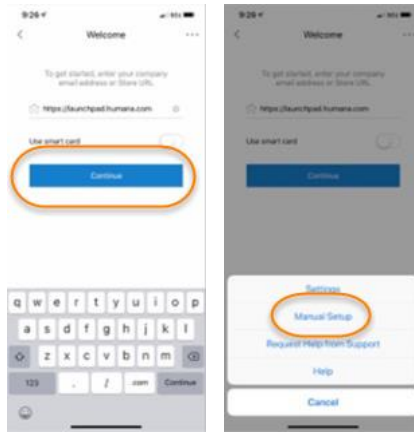
5. At the notifications prompt, tap “Allow.” If you do not wish to receive notifications from the app, tap “Don’t Allow.” The app can still be used without allowing notifications.



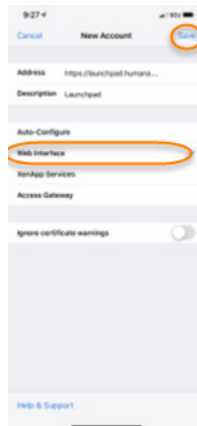
6. Tap the “Get Started” button



7. Tap the three dots in the upper right of the window, then tap “Manual Setup.”



- At the New Account window enter <https://launchpad.humana.com> in the address field. Enter "Launchpad" in the Description field. Tap "Web Interface." Then tap Save in the upper right of the window.

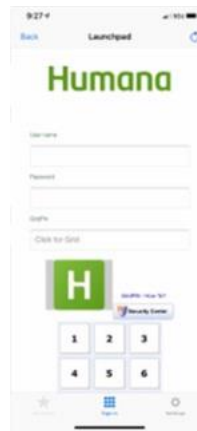


## Using Launchpad

1. From the device home screen, locate and tap the Workspace App icon.



2. Tap "Launchpad" to open the login window. Enter your username, password, and GridPin then tap the "Log On" button.



3. Tap an application icon to start that application. To access available desktops, tap the 3 lines in the upper left of the screen, then tap "Desktops." Tap a desktop icon to start that desktop.

